



Oregon Offices
3581 Kindt Drive, Suite 200
The Dalles, Oregon 97058
p 541.296.5440
f 541.296.5072

No.	Date	Description
A	06/28/21	ISSUED FOR REVIEW

Revisions

Project:
AVANGRID RENEWABLES
CHALKLEY SOLAR
O & M BUILDING
CALCASIEU PARISH, LOUISIANA

0 2.5 5 1 2 3
FULL SIZE SHEET IS 22 X 34"

Sheet Title:

SITE PLAN

11-010
Project No.
Date: 06/28/21
A101_11-010_FLOOR PLAN
CAD File Name:
DBM
Drawn
RPH
Checked

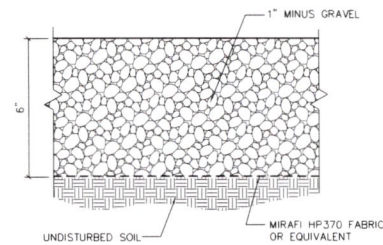
A001

GENERAL NOTES

SITE PLAN IS NOT BASED ON SURVEY
INFORMATION. FOR INFORMATIONAL
PURPOSES ONLY.

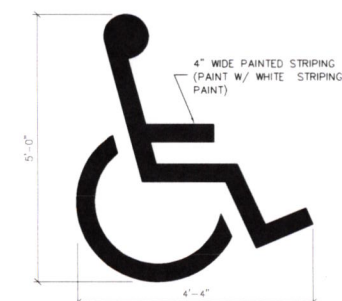
KEY NOTES

- 4" THICK WELDED WIRE REINFORCED
CONCRETE PAVING. PROVIDE
EXPANSION JOINTS AT 20'-0" O.C. MAX,
AND TOOLED CONTROL JOINTS AT 5'-0"
TYP.
- 7" THICK CONCRETE W/#4 @ 12" EW, TYP.
- 5" THICK CONCRETE W/#4 @ 18" EW, TYP.
- VAN ACCESSIBLE ADA PARKING SPACE
- ADA SIGNAGE, FIELD VERIFY LOCATION
SEE DETAIL 4.
- CONCRETE CURB STOP
- NEW GRAVEL SURFACING SEE DETAIL 2,
THIS SHEET.
- NEW GENERATOR AND PAD:
4'-4" x 9'-4" x 7" THICK CONCRETE PAD
WITH #4 @ 18" O.C. EA. WAY
- NEW 500 GAL. PROPANE TANK AND PAD:
6'-10" x 10'-4" x 4" THICK CONCRETE
PAD, WITH #4 @ 18" O.C., EA. WAY
PROVIDE (4) BOLLARDS. SEE DETAIL 5.
- SEPTIC TANK LOCATION
- WELL LOCATION
- (3) NEW BOLLARDS, 6"ø, CONCRETE
FILLED. SEE DETAIL 8/S101
- EXTERIOR JUNCTION BOX, STUB-IN
CONDUITS FROM SCADA ROOM. SEE
FLOOR PLAN, SHEET A102.
- HIGHWAY 14
- EXISTING 20'-0" WIDE CHAINLINK GATE
W/ BARBWIRE



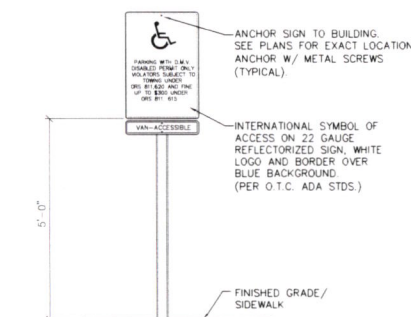
NOTE: VERIFY DETAIL PER GEO-TECHNICAL RECOMMENDATIONS

2 GRAVEL SECTION NOT TO SCALE

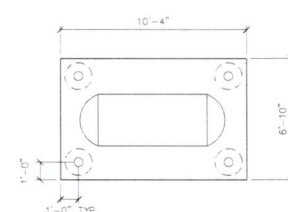


NOTES:
1. INTERNATIONAL A.D.A. COMPLIANT HANDICAP ACCESSIBLE
SYMBOL. VERIFY SIZE WITH LOCAL AND CITY STANDARDS

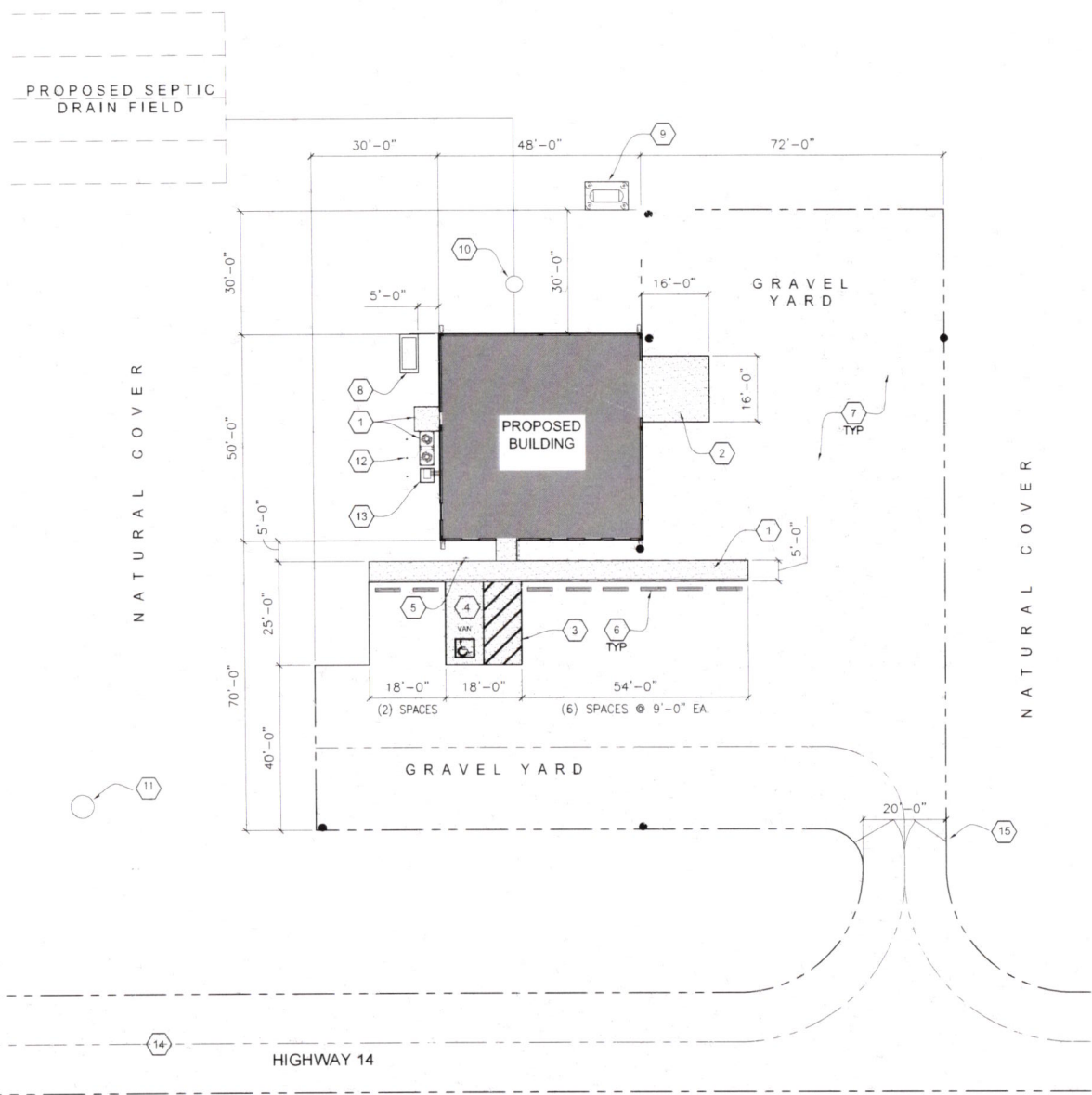
3 ADA ACCESSIBLE SYMBOL SCALE: 3/4"=1'-0" C031-6277



4 ADA ACCESSIBLE SIGN SCALE: 3/4"=1'-0" C031-6277



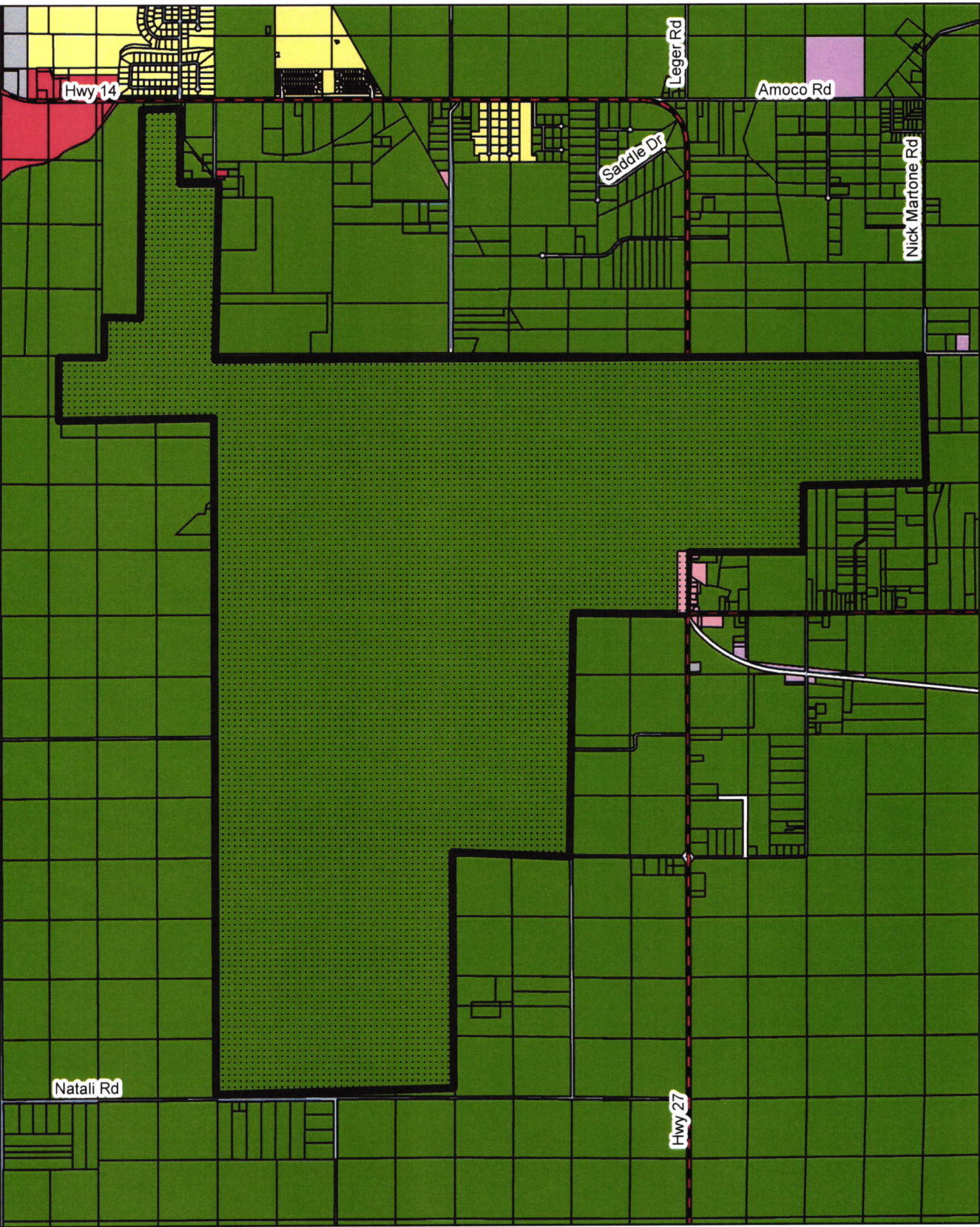
5 TANK FOUNDATION PLAN 1/4"=1'-0"



1 ARCHITECTURAL SITE PLAN 1/16"=1'-0" 0 1 2 4 8



Sweetlake Land and Oil Co., Inc., et al



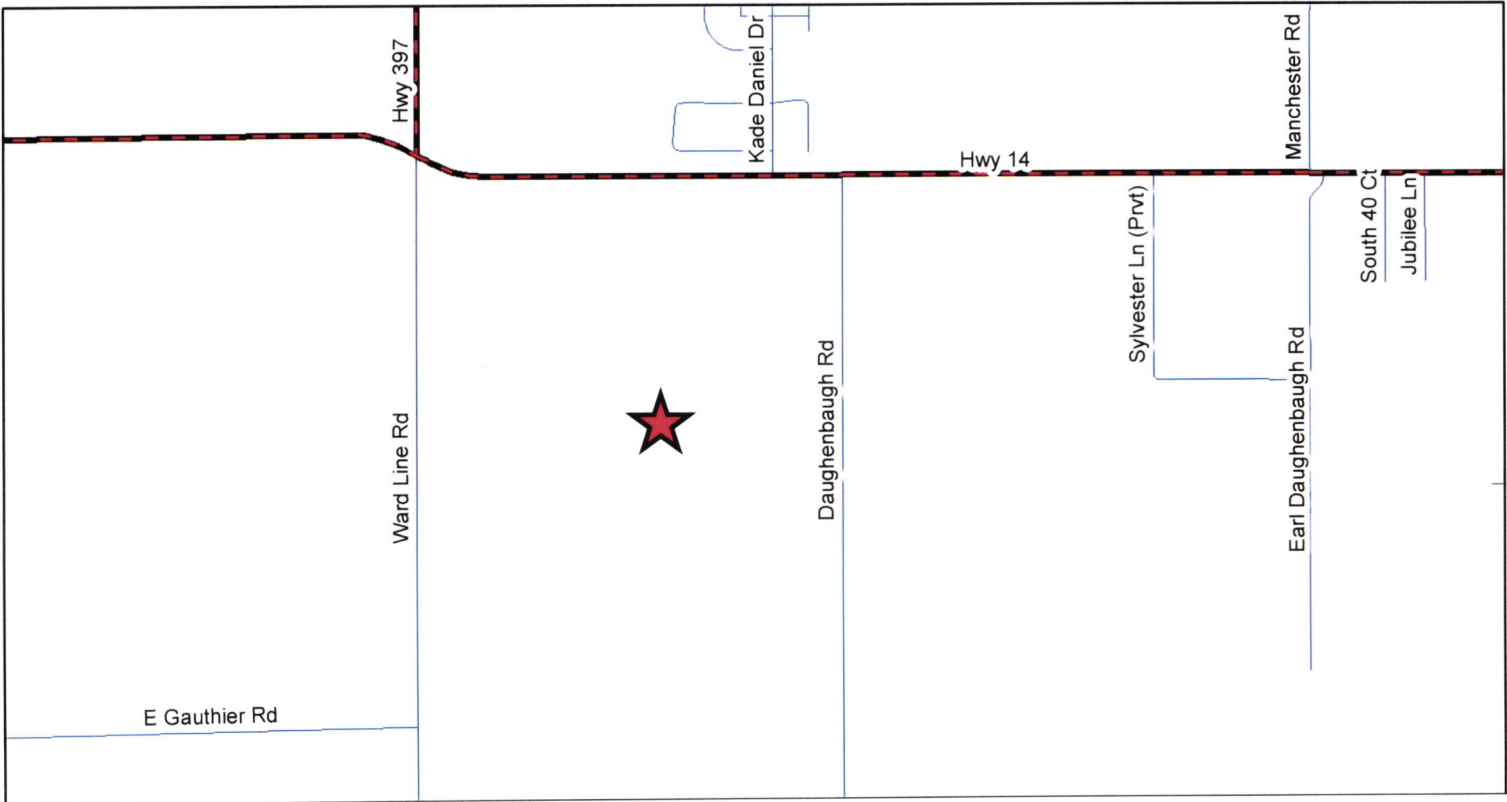
Petitioner's
Property

Legend

- A1
- C1
- C2
- C3
- CITY
- I1
- I2
- I2R
- I3
- PUD
- R1
- R2
- RM
- RMHP
- R-RVP
- LAKE
- NELSON



Police Juror
District 10
Tony Stelly





EX-0721-0118



EX-0721-0118



EX-0721-0118

